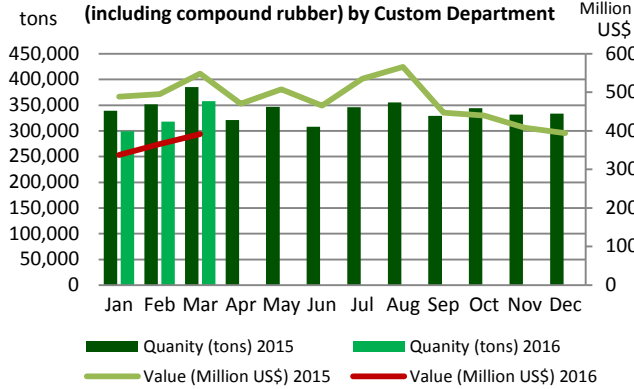


# Thailand Monthly Rubber Report – April 2016



**Thai NR export quantity and value**

(including compound rubber) by Custom Department

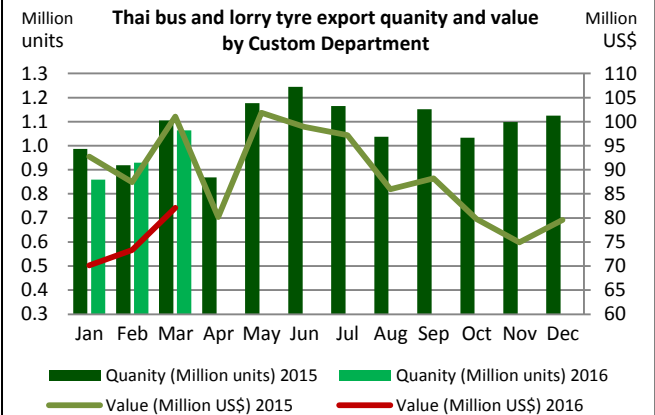
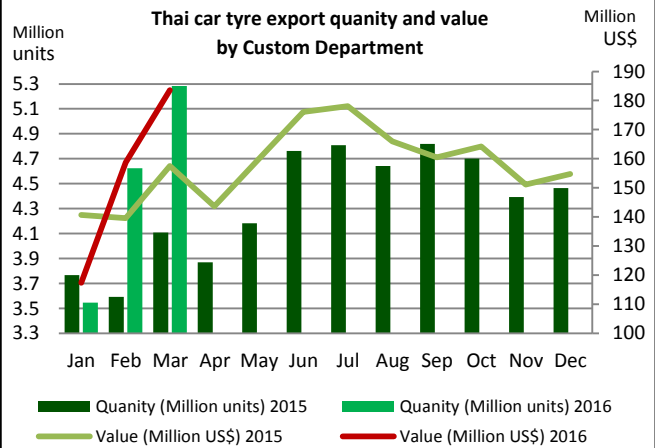


Thai NR export (Custom Department)		Mar 2016	%		Jan-Mar 2016	%
			MoM	YoY		
TSR	Quantity (tons)	162,431.92	10.10	3.71	447,772.60	-2.14
	Value (Million US\$)	187.38	8.83	-19.95	529.65	-23.50
RSS	Quantity (tons)	55,377.53	-0.83	-2.14	165,336.69	2.26
	Value (Million US\$)	71.86	4.13	-26.81	209.60	-22.37
Latex	Quantity (tons)	111,449.30	2.94	7.65	307,025.81	8.57
	Value (Million US\$)	94.98	7.17	-14.38	256.61	-14.38
Compound	Quantity (tons)	22,515.32	4.69	-61.19	57,698.45	-59.64
	Value (Million US\$)	31.70	3.35	-65.73	82.68	-64.51
Other	Quantity (tons)	6,066.62	-3.29	-41.38	18,680.86	-38.82
	Value (Million US\$)	5.71	12.90	-56.12	16.03	-57.74
<b>Total</b>	Quantity (tons)	357,840.68	5.43	-7.08	996,514.41	-7.35
	Value (Million US\$)	391.62	7.14	-28.62	1,094.57	-28.60

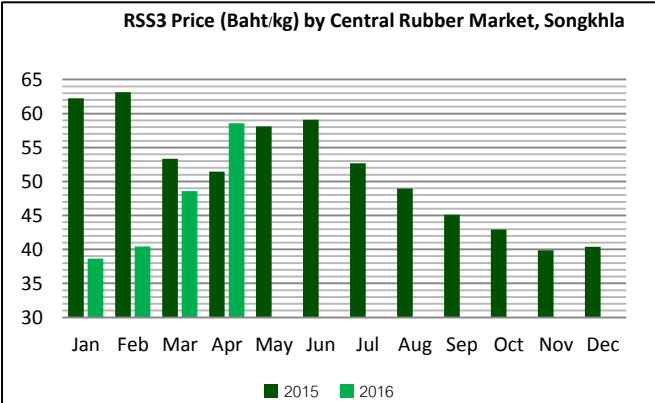
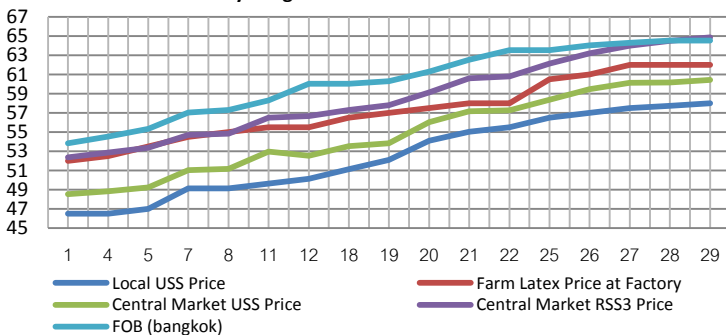
April average RSS3 price announced by Central Rubber Market in Songkhla stood at 58.58 Baht/kg, 20.19 % up from March in line with other markets due to the following factors. Output in producing countries is tight during wintering season, coupled with more severe El Niño, resulting in drought and extreme heat. Rubber Authority of Thailand accelerated the purchase of rubber for delivering to China, bringing about purchasing competition. International Tripartite Rubber Council, including Thailand, Indonesia and Malaysia is implementing export control of 15% until August 2016, resulting in lower global NR output. Global crude oil price climbed up to 43.73 US\$ per barrel as of 22 April 2016, 9.93% up from 18 April 2016. Chinese Q1/2016 economic figures improved considerably. Q1 GDP expanded by 6.7% yoy; March exports increased 11.5% yoy; Q1 industrial output expanded by 5.8% yoy; foreign direct investment is likely to increase by 4.5% in Q1. In addition, investors greeted good performance of major listed companies in the U.S.

In April 2016, Thailand exported 357,840 tons of natural rubber (including compound rubber), 5.43 % up from February and 7.08 % down yoy, generating export income of US\$ 391.62 million, 7.14 % up from February, and 28.62 % down yoy. Overall, during January to March Thai NR exports (including compound rubber) reached 996,514 tons, 7.35% down yoy. The 3 month export value touched US\$ 1,094.57 million, 28.6% down yoy.

In tyre sector, in March Thailand exported 9.97 million units of all tyres, 12.02 % up yoy, with the export value of US\$ 305.34 million, 0.91 % up yoy. Overall, during January to March Thai exports of all tyres reached 26.75 million units, 7.82 % up yoy, generating export income of US\$ 799.12 million, 5.32 % down yoy.



**April 2016 daily rubber price (THB/KG) by Songkhla Central Rubber market**



Thai NR prices (Baht/kg) by Central Rubber Market, Hatyai, Songkhla	Apr 2016	%	
		MoM	YoY
local unsmoked sheets	52.51	19.56	10.71
latex at factory	57.24	24.33	20.30
unsmoked sheets at Central Market	54.76	19.62	11.76
RSS3 at Central Market	58.58	20.19	13.88
FOB. (Bangkok)	60.31	17.43	7.60